

The Quality of Agricultural Irrigation Water in Taiwan

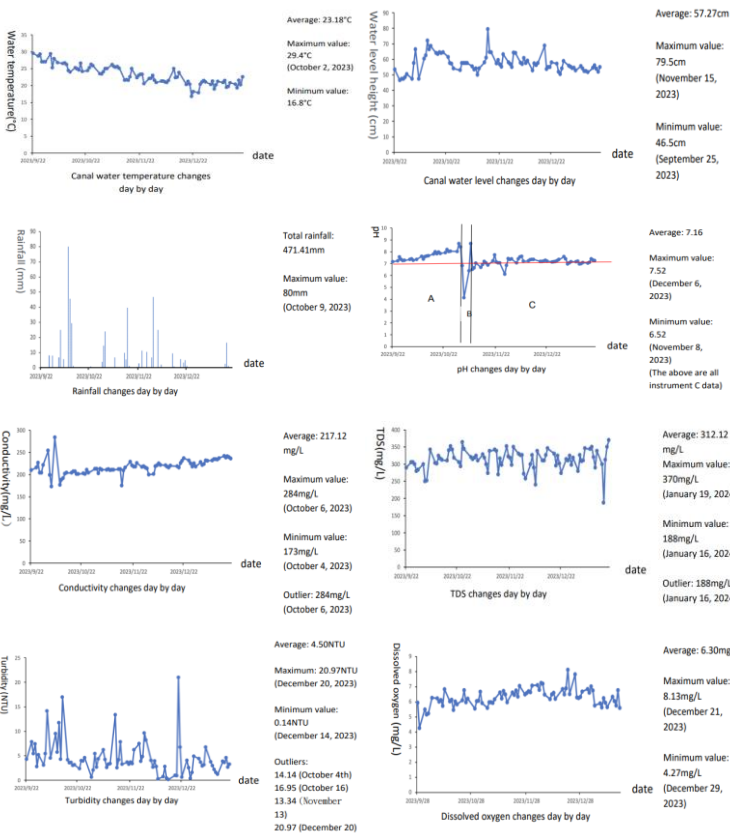
Abstract

This study will go to the midstream of agricultural irrigation water near Luodong Senior High School from 5:20 to 5:50 pm every Monday to Friday from September 21, 2023 to January 21, 2024 to measure various water quality data, and cooperate with the Taiwanese Ministry of Agriculture of the Taiwan shows that all measured items meet the specification limits. At the same time, samples were collected every Wednesday. After filtering impurities, it was found that the number of various types of cellulose was higher, while microorganisms and algae were less common.

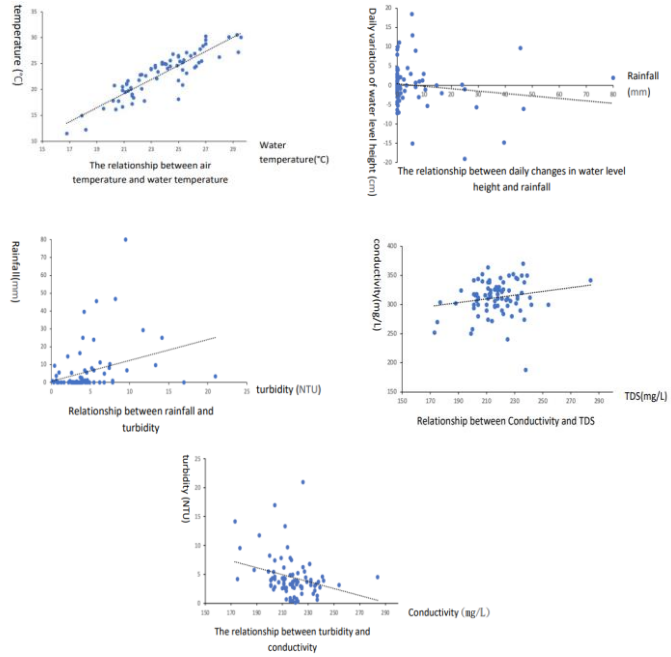
Research Methods

1. Connect the bucket to the Scout rope and tie it with the Scout rope railing.
2. Toss the bucket out from the center of the river.
3. After it is completely submerged in the water, pull it up and collect it. While taking the water sample, use a ruler to measure the water depth.
4. Use a beaker to collect water, measure it, and record the data.
5. Fill in the data into Excel.

Results



Discussion



Conclusion

1. Comparing the data collected by this institute with the agricultural irrigation water quality standards of the Ministry of Agriculture, we can know that the average of the measured data
2. The microfiber content observed in the downstream is higher than that in the upstream and midstream.
3. Conductivity and TDS Although the substances measured are particle concentrations in water, the concentration will also appear depending on whether the particles can conduct electricity. difference.
4. There are too many variables that need to be considered in turbidity and rainfall, so the data directly comparing the two is not highly relevant.
5. The data of dissolved oxygen and pH value are relatively stable and do not change much.
6. All are within the qualifying standards

Item	Irrigation water quality standard limit	Value Research measured average
Water temperature	<35°C	23.18°C
Hydrogen ion concentration index (pH value)	6.0-9.0	7.16
Conductivity	<750mg/L	217.12mg/L
Dissolved oxygen	>3mg/L	6.25mg/L