



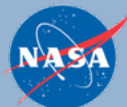
An Taisce  
The National Trust for Ireland



# GLOBE Ireland - Exploring Local Climate Risks and Resilience Opportunities through GLOBE

By: Dr Aileen Bright, GLOBE Ireland and The GLOBE Ireland Team

Sponsored by:



Supported by:



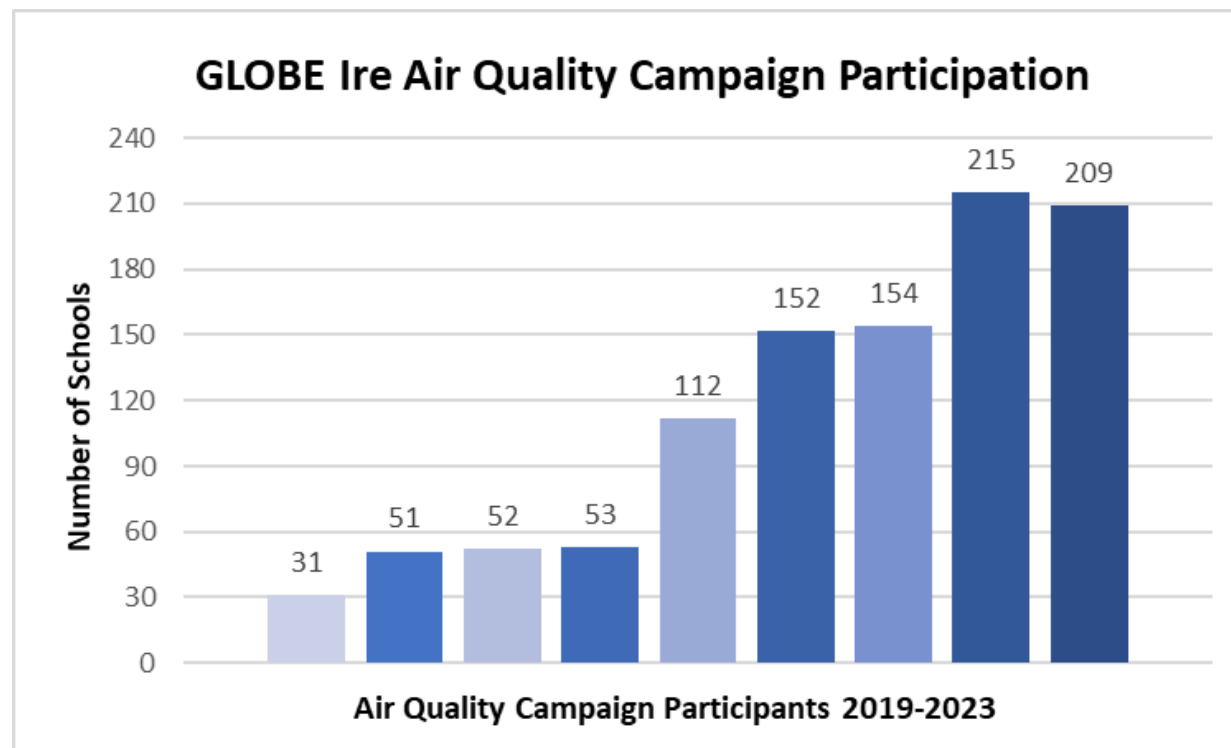


Ireland

Year Joined: 1995

# GLOBE Ireland

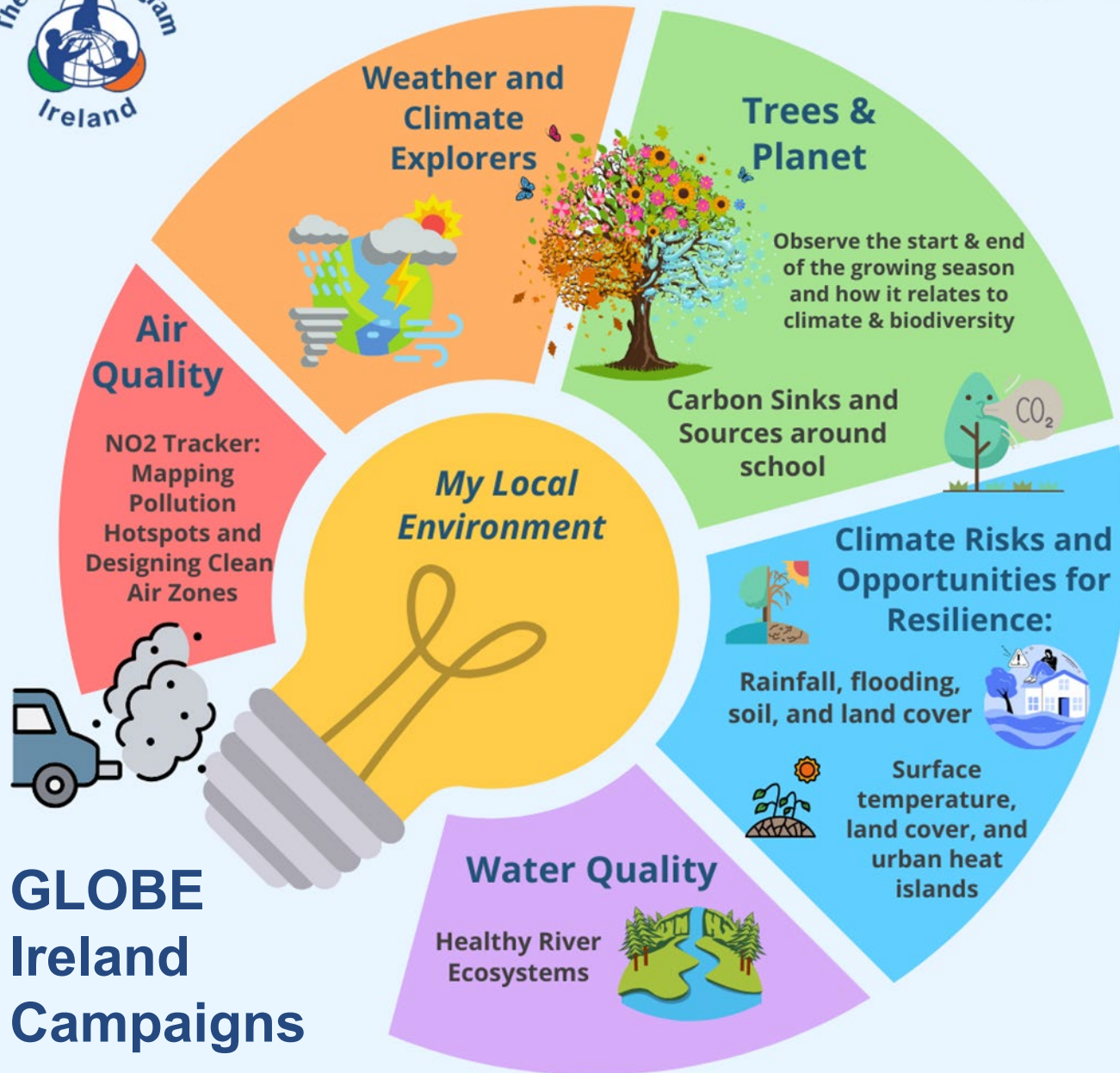
- Coordinated by the **Environmental Education Unit** of An Taisce (Ireland's National Trust) since 2018
- Sponsored by the **Irish EPA**
- Initial focus on **Air Quality**





# GLOBE Ireland

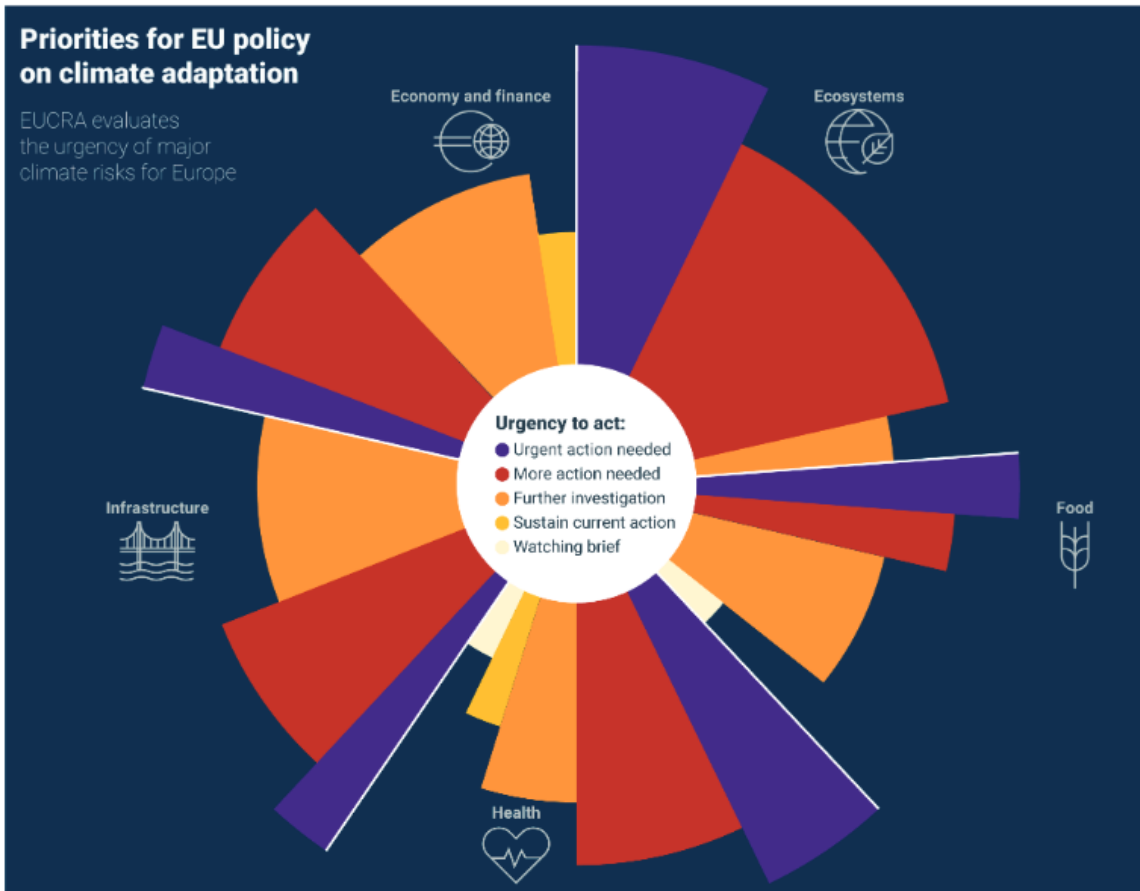
## GLOBE Ireland Campaigns



- Explore, Observe and Record – **GLOBE Protocols**
- **Assess** (health, design)
- **Solutions Oriented Thinking**
- **Communicate**
- Involve Local **Community** and GLOBE Community
- **Expert Guidance** (NASA, EPA, Scientists)
- **Projects (Science, Art/Song)**

# Climate Change and Climate Resilience

## EU Climate Risk Assessment



European Climate Risk Assessment — European Environment Agency (europa.eu)

## Flooding in Midleton, Cork 2023



The extent of the flooding in Midleton on Wednesday captured in aerial photographs. IMAGE: Guileen Coast Guard



Agriculture



# How Spongy is my School?



- Record Rainfall (1 month) using GLOBE Protocols
- Observe Flooding (puddle mapping!)
- Assess Local Landcover
- Soil Investigation
- Design Flood Resilient School (NBS)
- Involve Local Community
- Expert Guidance (Met Eireann, NASA)
- Small Project Funding

# Example – Rockford Manor School, Dublin

*Citizen Science to Action – Implementing changes to their local environment*



## Land Cover, Flooding, Design



Key:

- Drains
- Areas Of Flooding
- Areas With Water (Water butt & barrel)

### **Nature-Based Sustainable Drainage Solutions Local Actions for Global Change !!!**



These solutions will also increase biodiversity and improve well-being for our students and school staff.

- Prevent rainwater pooling
- Slow the flow – prevent overflowing drains
- Improve flood resilience
- Improve biodiversity

## Water Butts, Rain Planters, Permeable Pathway





# How Healthy is my Local River?



Mount St Michael School, Cork



- Explore Health of Local River/Stream
- Assess Ecosystem (Riparian, Aquatic)
- Water Quality (pH, Temp, Nutrients) testing using GLOBE Protocols
- Raise Awareness, Clean-up of Local River
- Expert Guidance (LAWPRO, EPA)

## You Can Make a Difference

- *Get Outdoors*
- *Get to know your nearest stream*
- *Look for Indicator Species*
- *Raise Awareness in your Community*
- *Make a noise, you will be heard*
- *If we don't care about our waterways - who will care?*

# THANK YOU!



**Aileen Bright**  
*GLOBE Country Coordinator*  
*GLOBE Team – Maya, Toshka, Orlaith*  
GLOBE Programme Manager, Ireland



[globe@eeu.antaisce.org](mailto:globe@eeu.antaisce.org)



Supported by:

