



# The Best of GLOBE Europe & Eurasia 2025

## Showcasing Student Research and Community Impact

### 4-5 February 2025, online

#### Overall criteria for the project

- Clearly linked to GLOBE activities
- Has a scientific and environmental aspect
- Communicates not only HOW it has been done, but also WHY and WHAT environmental and community benefits it brings
- The activities described were done from March 2024 onwards
- A presentation should be max of 5 minutes, a video max of 1 minute.
- Submitted from December 1 to December 31 through [this form](#).
- Language of the project and the conference presentation is English

If you want to win one of the awards for the best projects, see the specific criteria for each awarding category on the next page.

#### Formats accepted

Slides, Bookcreator, StoryMap, Video

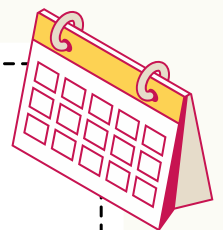
#### Awards & Prizes

- GLOBE materials and tools
- Stipend of 400 EUR per team to be used to attend a GLOBE event\*
- Certificates
- Feedback from experts
- Projects will be highlighted at [globe.gov](https://globe.gov)



#### Timeline

1. [Registration](#) opens on December 1
2. Deadline for submission of projects: December 31
3. Accepted projects announcement: January 15
4. Online conference and announcement of the awarded projects: February 4 and 5





\* Stipend can be solely used to attend the event that will be specified in December



# Awarding Categories

## The Best of GLOBE Europe & Eurasia 2025

A project can be awarded in more than one category.  
Only the student teams who will attend the online conference on February 4/5 are eligible for receiving the award.

Awarding Category	Specific Criteria for each category (to be followed along with the Overall Criteria)
Scientific inquiry 	<ul style="list-style-type: none"><li>• All the steps of research process are described (incl. research question, hypothesis, observation and data collection, data analysis &amp; interpretation and conclusions)</li><li>• Data is collected according to the GLOBE protocol or your clearly described observation design</li><li>• Conclusions are supported by the data evidence</li><li>• The overall criteria are followed (see previous page)</li></ul>
Climate action	<ul style="list-style-type: none"><li>• Project has clear benefit in relation to climate</li><li>• Project encourage other students / community to take action</li><li>• The action follows up on field observation, mapping or similar type of GLOBE research done by students</li><li>• Examples of the actions that go very well with GLOBE research: improvement of water harvesting, cooling solutions, land use change, increase of biodiversity or carbon storage, anti-erosion measures, rewilding a school garden etc.</li><li>• The overall criteria are followed (see previous page)</li></ul>
Community impact 	<ul style="list-style-type: none"><li>• Community impact is clearly described and benefits explained</li><li>• The project was implemented in collaboration with local community members/groups (experts, municipality, other schools)</li><li>• Project also increased community environmental awareness in specific topic</li><li>• The overall criteria are followed (see previous page)</li></ul>
Video story	<ul style="list-style-type: none"><li>• Video has a clear message and is engaging</li><li>• Video was recorded live or has components that were recorded live. (Photo slideshows will not be awarded under this category)</li><li>• Video has English subtitles</li><li>• Max. 1 min long</li><li>• The overall criteria are followed (see previous page)</li></ul>
Song 	<ul style="list-style-type: none"><li>• Song has a clear message</li><li>• Song has an English transcript/subtitles</li><li>• Max. 1 min long</li><li>• The overall criteria are followed (see previous page)</li></ul>

