

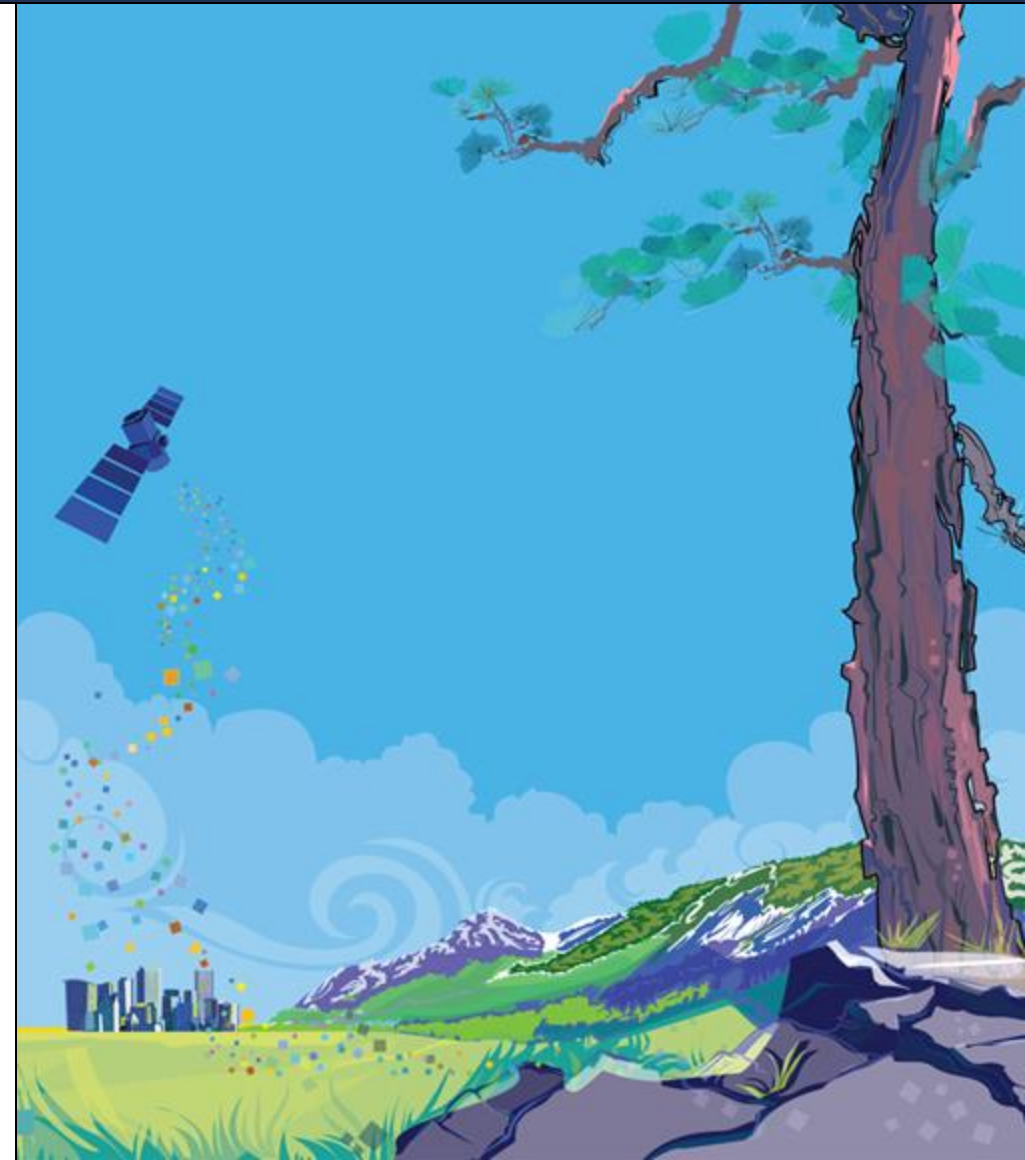


The GLOBE Observer App

Observer Connect

Joe Wieclawek
Lead GLOBE Observer App Developer

November 2024





The GLOBE Observer Ecosystem



All GLOBE Protocols

35 additional protocols for trained users
 *Pedosphere protocols coming soon

Observer Protocols

Data Submissions

Receive ~60K daily submissions for a total of 22.4 million for 2023

Automated Photo Approval

Use AI to analyze all submitted photos for appropriateness

- ~1,600 photos per day, 50K total in October 2024
- So far, 812K photos approved automatically by the AI
- Questionable photos are reviewed and approved via a special tool by members of Observer Team, Thanks Brian C!

Data Retrieval Tools

- My Observations – for viewing your observations
- Visualization System – for viewing data on a map and creating charts
- ADAT – for searching and exporting data
- API – for automating data retrieval

Satellite Matching

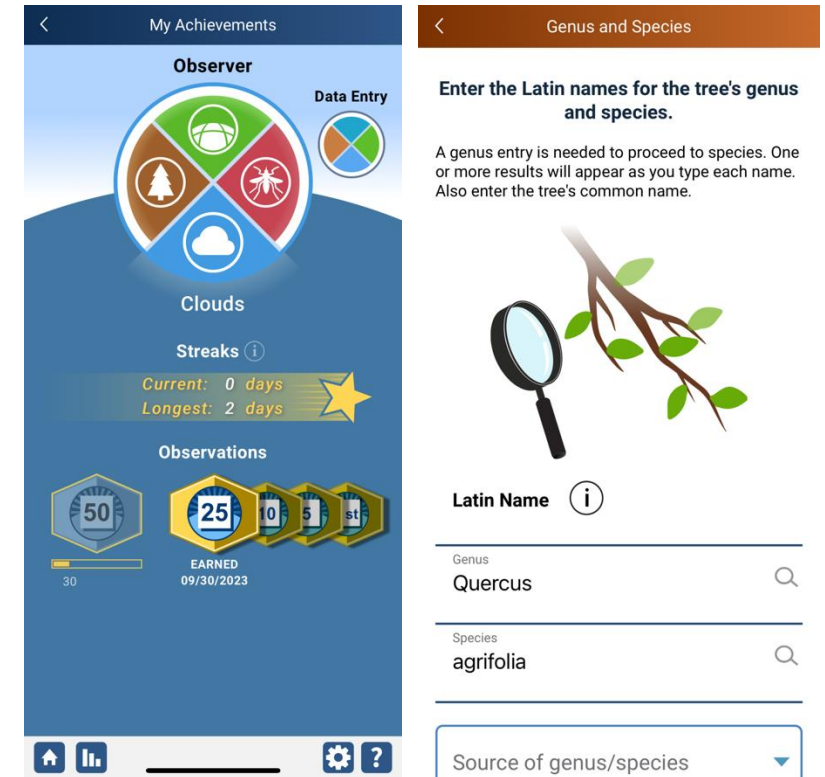
- Clouds data is provided to NASA Langley Research Center
- Match information is generated and emailed to the users

Total of ~261 million measurements from 300K users!



Recent Updates to the App

- New achievements system
- New genus and species features for Tree Heights
- “Hybrid” App - write most of our code once for both iOS and Android
- Over time, some components that are platform-specific get out of date
- App Store / Play Store have requirements to keep upgrading these components
- Recent updates allowed us to:
 - Upgrade some of the components that had issues with new operating systems
 - Maintain compliance with App Store / Play Store requirements



Highlights as Developers – Impact

- 2017 Eclipse
 - Our first release of the eclipse tool
 - 10,000 users
 - 20,000 clouds observations
 - 60,000 photos
 - 80,000 air temp measurements

- All in one day!



Highlights as Developers – Innovation

- Opportunities to try new things
- “Wouldn’t it be cool if?”
 - ...we could show a compass?
 - ...we could overlay the compass on a camera view?
 - Result: Augmented reality camera views!



Q & A

