

GLOBE Land Cover

We call the type of land at the Earth's surface **land cover**. You may encounter many different types of land cover everyday, including roads, fields and forests.

Use this guide to help identify land cover types while using GLOBE Observer.

Cultivated

Crops or Pastures



Cultivated Grass



Orchards



Plants managed by humans, like crops, orchards and lawns are considered cultivated.

Herbaceous & Grassland

Grasses

Tall Medium Short



Tall grasses are over 2 meters (6.5 feet) and short grasses are under 50 cm (2 feet). Grasses that are mowed are considered cultivated.

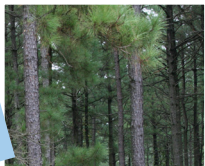
Ferns or Flowers



Trees

Evergreen

Needle Leaved



Broad Leaved

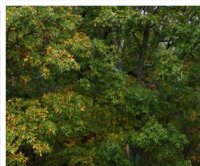


Deciduous

Needle Leaved

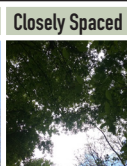
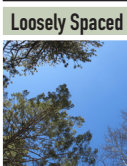


Broad Leaved



Extremely Dry

If the tops of the trees are touching, these trees are considered closely spaced.



Loosely Spaced

Closely Spaced

Shrubs

Tall shrubs are over 2 meters (6.5 feet).

Evergreen

Tall



Short



Deciduous

Tall



Short



Extremely Dry

Tall



Short



Barren

Barren land has a limited ability to support life. The snow or ice found in barren areas does not completely melt each year.

Dry Salt Flats



Perennial Snowfields



Sandy



Glaciers



Bare Rock



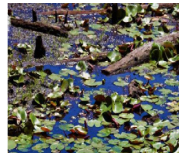
Soil



Wetlands

Freshwater

Lake



River



Marine



Wetlands are areas where plants grow out of the water, like marshes or swamps. Wetlands often border open water, like rivers or oceans.

Urban

Residential



Commercial



Roads and Parking



Open Water

Freshwater



Marine

